



Alura WOODGRAIN

ARCHITECTURAL METAL PRODUCTS

Proudly Manufactured By

IMARK
ARCHITECTURAL METALS



ERIC CORP PLAZA
Sherwood Park, AB CANADA
5.25" Reveal Panel in Espresso



Inspired Design
Effortless Installation

Experience a cladding panel like no other
with Alura's curated selection of natural
woodgrain finishes and profiles made for an
effortless and inspired design.

THE ALLURE OF ALURA

Designed By Manufacturing and
Installation Trade Professionals

Designed by trade professionals for effortless contractor installation to maximize jobsite productivity, the Alura line of metal siding panels drop or lock together quickly with hidden fasteners for a seamless look.

Alura Woodgrain Metal Products are designed and manufactured by the team at IMARK Architectural Metals. IMARK is a Canadian based independent supplier, fabricator, and installer of metal roof and wall products. Founded in 1995, IMARK has taken great strides to consistently invest in its people and technology to meet our customer's needs. Our unique blend of passion, expertise, and imagination helps us deliver on function and provide innovative solutions to the architectural metal industry.



**Life Connection of Ohio
Kettering, OH USA
6.4" Wide Panel in Pecan**

PRODUCT FEATURES

Sustainable

Made from 100% steel, Alura Woodgrain Metal Products are infinitely recyclable. Its long-term performance also makes it a leading candidate for sustainable building practices when evaluating product lifecycles.

Guaranteed Performance

Alura's woodgrain finishes use PVDF, an industry proven metal coating known for colour retention and UV resistance, that protects against weathering to deliver long term durability.

Aesthetic Appeal

With 12 beautiful natural woodgrain finishes, Alura adds warmth that flawlessly integrates into a building's design for a visceral experience.

High Strength and Workability

Offering 6x the strength to weight ratio of real wood, Alura eliminates the risk of rot and sagging with "cut to fit" lengths for optimal workability.

Cost Effective

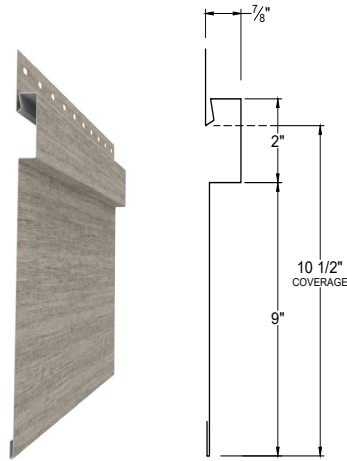
Alura offers extraordinary quality and simplistic profiles for time saving installation that will keep your project on budget.

Warranty

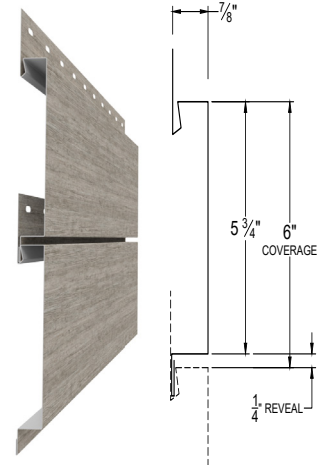
Utilizing durable materials and finishes, Alura Woodgrain products are backed by a 25-year warranty that helps reduce risk and uncertainty when selecting a building product.



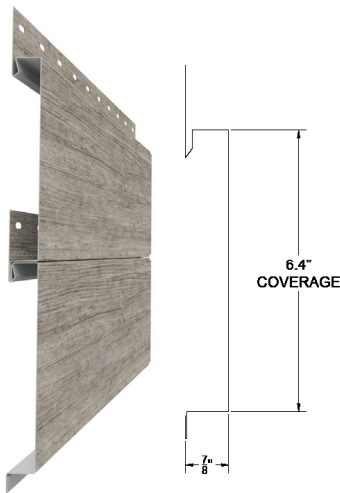
PROFILE GALLERY



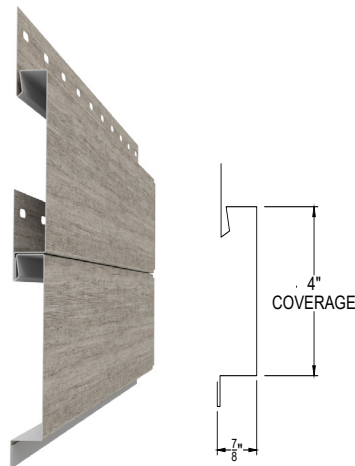
BOARD & BATTEN (497)



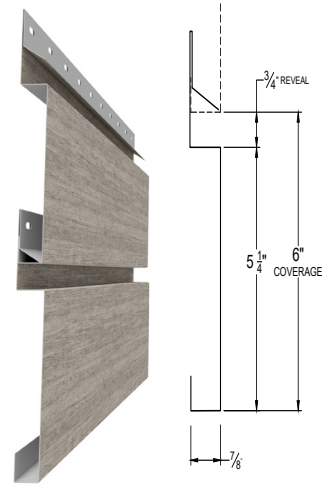
SHIPLAP (498)



WIDE (499)



NARROW (500)



REVEAL (501)

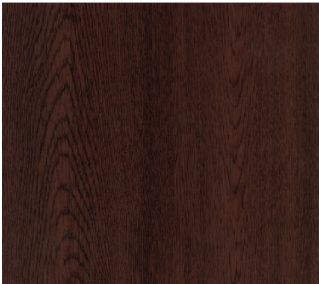
PART NO.	PROFILE	HEIGHT	FACE DIMENSION	TOTAL COVERAGE	SQFT. PER 10' LENGTH	10' PANEL (LBS)
497	Board & Batten	7/8"	-	10.5"	8.75	10.12
498	Shiplap	7/8"	5.75"	6"	5.00	5.78
499	Wide	7/8"	-	6.4"	5.33	6.16
500	Narrow	7/8"	-	4"	3.33	3.85
501	Reveal	7/8"	5.25"	6"	5.00	5.78

*All profiles are 24 gauge material and come in 8', 10', and 12' lengths.

COLOUR GALLERY

Choose from our curated selection of woodgrain finishes and colours.

Alura products are also available in standard pre-painted colours and metallics.



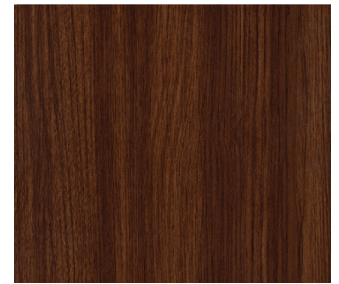
WENGE



ASHWOOD



CYPRESS



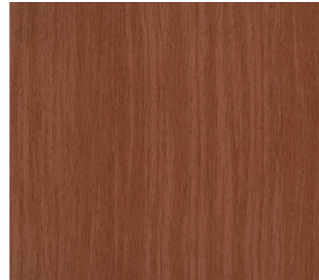
BRAZILLIAN WALNUT



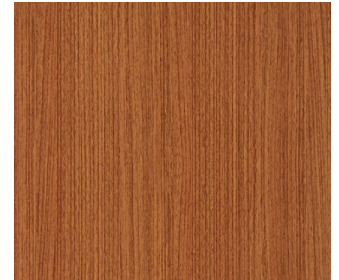
MAHOGANY



ROSEWOOD



ALDER



COTTONWOOD



MEDIUM OAK



NATURAL MAPLE



FRENCH OAK



WHITE OAK

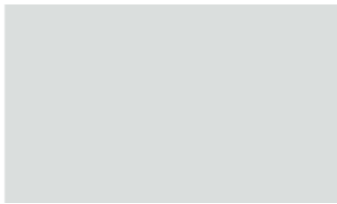
Colour Accuracy: There may be minor colour differences between profile samples, colour cards, and your final selected product may occur due to printing, manufacturing, and lighting differences.



COLOUR GALLERY

PRE-PAINTED & METALLIC

PRE-PAINTED



REGAL WHITE



PARCHMENT



SIERRA TAN



MOCHA



WEATHERED COPPER



BRONZE



DARK BRONZE



TERRA COTTA



COLONIAL RED



RETRO RED



HEMLOCK GREEN



FOREST GREEN



HARFORD GREEN



BLACK



TWILIGHT BLUE



REGAL BLUE



OLD TOWN GREY



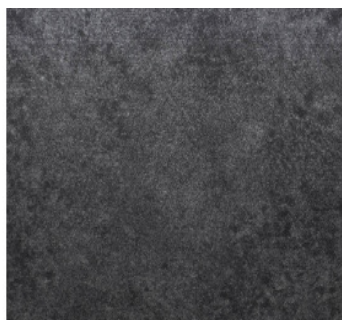
OLD ZINC GREY



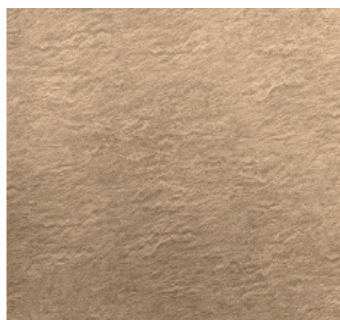
SLATE GREY

Colour Accuracy: There may be minor colour differences between profile samples, colour cards, and your final selected product may occur due to printing, manufacturing, and lighting differences.

METALLIC



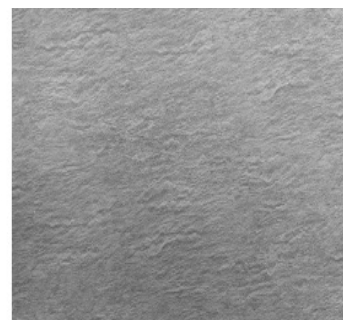
STARLIGHT



CHAMPAGNE WAVE



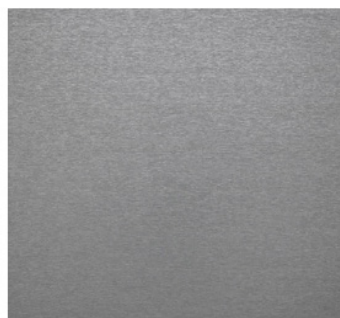
COPPER WAVE



SILVER WAVE



BRUSHED CARBON



BRUSHED GRAPHITE

Colour Accuracy: There may be minor colour differences between profile samples, colour cards, and your final selected product may occur due to printing, manufacturing, and lighting differences.



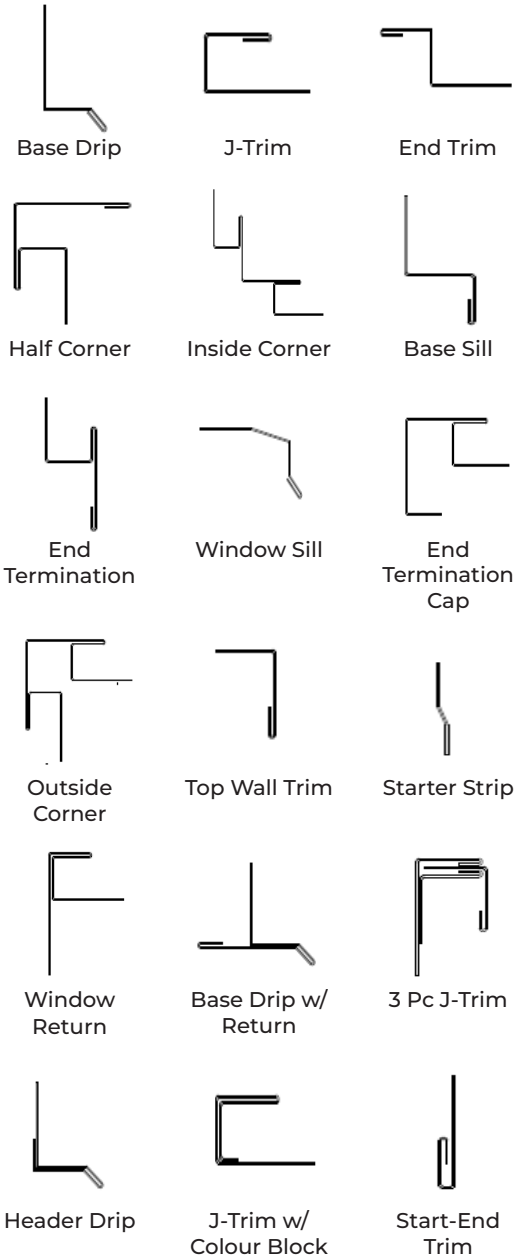
TRIMS FLASHINGS

Trims

PRODUCT	DIMENSIONS (INCH/MM)	LENGTH*	SKU
Base Drip	4.25" / 108mm	10'-0" / 3048mm	502
J-Trim	4.75" / 121mm	10'-0" / 3048mm	503
End Trim	4.75" / 121mm	10'-0" / 3048mm	504
Half Corner	9.50" / 241mm	10'-0" / 3048mm	505
Inside Corner	14" / 356mm	10'-0" / 3048mm	506
Base Sill	4.75" / 121mm	10'-0" / 3048mm	507
End Termination	6" / 152mm	10'-0" / 3048mm	511
Window Sill	5" / 127mm	10'-0" / 3048mm	512
End Termination Cap	10" / 254mm	10'-0" / 3048mm	513
Outside Corner	14" / 356mm	10'-0" / 3048mm	514
Top Wall Trim	2.625" / 67mm	10'-0" / 3048mm	515
Starter Strip	1.875" / 48mm	10'-0" / 3048mm	517
Window Return	8" / 203mm	10'-0" / 3048mm	518
Base Drip w/ Return	6.86" / 174mm	10'-0" / 3048mm	519
3 Pc J-Trim	9.875" / 251mm	10'-0" / 3048mm	520
Header Drip	6" / 152mm	10'-0" / 3048mm	521
J-Trim w/ Colour Block	6.75" / 171mm	10'-0" / 3048mm	522
Start-End Trim	4.5" / 114mm	10'-0" / 3048mm	523
2 Pc T-Trim	8" / 203mm	10'-0" / 3048mm	524

*12' trim lengths are available for 12' Alura Woodgrain Panels

All trims are 24 gauge woodgrain metal material to match Alura Woodgrain Panels unless otherwise specified.

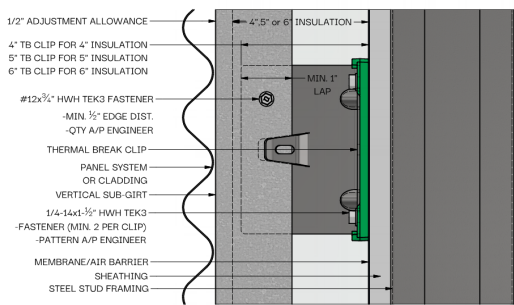
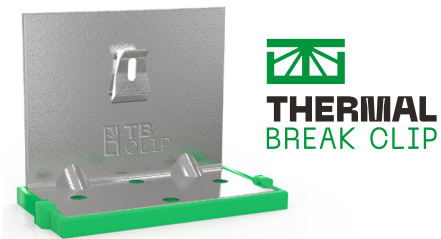


RAIN SCREEN ACCESSORIES

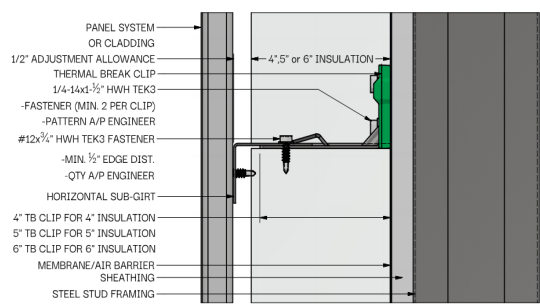
Clips

The THERMAL BREAK CLIP™ can be used for 3"-6" insulation and will accomodate a variety of wall depths. It can also perform on substrates like wood, steel stud assembly, concrete (poured in place), and concrete block (CMU).

THERMAL BREAK CLIP™ is available in 4", 5", and 6" sizes and is adjustable + / - 1-2". No shims required.



VERTICAL SUB-GIRT



HORIZONTAL SUB-GIRT

Sub-Girts

PART NO.	PROFILE	LEG1	LEG2	LENGTH	SLOT SIZE	SLOT SPACING
TB-G	Sub-Girt	1-7/8"	1-1/2"	10-0"	-	-
TB-GV	Vented Sub-Girt	1-7/8"	1-1/2"	10-0"	7/16"	1-1/2"

*All Sub-Girts are 18 gauge G90 (ASTM A653-09)



Sub-Girt



Vented Sub-Girt



THE EASILY SPECIFIED SOLUTION

SIMPLIFIED PRODUCT SOURCING

The Alura Woodgrain Metal Products offers superior, proven performance, and aesthetics in a complete package of panels, trims, and accessories all while incorporating recyclable, non-combustible material properties.

HOW WE HELP

Architects

We have developed a growing library of architect resources and CAD files for you to learn about and be confident in knowing the in's and out's of the Alura Panel system. We know that not all projects are the same, IMARK's team of Alura Woodgrain experts are empowered and capable to help discuss the nuances of your project application. We are the main point of contact for all your requests.

Contractors & Homeowners

As a contractor ourselves, we expect timely informed responses for quoting and information. We expect reliability and dependability to help reduce risk. We also like things that are easy to install. We have built our service to you on these expectations and have delivered to partners and projects across North America with great success. As the main point for both architects and you the contractor we have aligned communication, so there are no surprises come tender day or order day.

CUSTOMER SERVICE

We're here for you. The most knowledgeable experts on Alura Woodgrain Products are the same people who design, manufacture, and install them. Call, email or video meet with us and get your questions answered.

TRUSTED

Across North America, you can find Alura Woodgrain Metal Products on projects contracted or designed by:

PCL, Chang Architecture, Brian Alsopp Architects, Bauen Roofing, Architectural Metals Inc., Shook Construction, and West Coast Architectural Sheet Metal.

HOW TO ORDER

DIRECT FROM THE MANUFACTURER

SAMPLES

Colours and Profiles

We have curated a wide variety of colours and profiles to match your needs. Reach out to a member of our team or place a sample order via our website to request samples and profiles, and we will have them delivered to your door.

FULL SERVICE ORDER

Shipping & Logistics

All orders ship direct from IMARK's manufacturing facility. Whether you want your order sent straight to site or to your warehouse, we can accommodate - just let us know your preference.

Alura Woodgrain products are shipped across Canada and The United States.

Flashings, Trims, Accessories & More

From start to finish you can order a complete installation package from us - a one stop shop!

Soffit

Available in a variety of perforated profiles, widths, lengths, and colours.

Flashings and Trim

Available in woodgrain material to match your Alura panels.

Wall Accessories

Louvers, signage, awnings, sunshades, and much more. Custom options are available.

Alura Woodgrain Accessories

Screws, rivets, colour match silicone and caulking.

Rain Screen Accessories

Thermal Break Clips and Sub-girts.



675 ALMANOR
Sunnyvale, CA USA
6.4" Wide Panel in Dark Ash and Pecan



14440-123 Avenue
Edmonton, AB CANADA

+1.780.448.8997
info@imarkmetal.com

alurawoodgrainmetalproducts.com
imarkmetal.com